

Signalling solutions

Monolithic tower lights

Harmony type XVC Ø 40, Ø 60 and 100 mm

Pre-assembled and pre-cabled tower lights



Presentation

The monolithic tower lights in the Harmony XVC range are designed for long distance indication of the operating states or sequences of a machine or installation, either visually by means of illuminated signalling units visible through 360°, or audibly by means of an adjustable buzzer or siren.

- The range includes small diameter products (40 and 60 mm) and larger diameter products (100 mm). It is therefore suitable for use in virtually all activity sectors :
 - XVC 4 (40 mm) tower lights are used mainly in the food-processing and medical sectors,
 - XVC 6 (60 mm) tower lights are used in semi-conductor factories, on conveyor belts and on small food or drink dispensing machines in the commercial sector,
 - XVC 1 (100 mm) tower lights are more particularly designed for industrial applications and machine-tools.

- The entire range provides an IP 54 degree of protection to allow outdoor as well as indoor use.

- XVC tower lights are supplied:
 - with 1, 2, 3, 4, or 5 illuminated signalling units (up to 3 for XVC 1●●HK),
 - with or without a buzzer or siren,
 - pre-assembled and pre-cabled,
 - fitted with a support tube and bracket for mounting on a vertical support or 3 screws for direct mounting on a horizontal surface (depending on the model).

Illuminated signalling

Several lens unit colours are available from the catalogue:

- 5 colours for XVC 1●●K and XVC 1●●SK (red, orange, green, blue or clear),
- 3 colours for XVC 1●●HK (red, orange, green).

The colours are always placed in that order, from top to bottom.

The light source consists of Super Bright LEDs which provide optimum luminosity.

Audible signalling

The tower light is supplied with or without an audible signalling unit (buzzer or siren) depending on the required configuration. This audible unit is located in the base of the tower light.

For products equipped with a buzzer, the type of signal (continuous or intermittent) can be reversed by modifying the cable connections (only for 60 and 100 mm units). For products equipped with a siren, it is possible to choose between 16 melodies, either by a switch or by 4 external digital outputs.

A potentiometer is also present in the base for adjusting the audible signalling volume, up to a value of:

- 85 decibels for XVC 1●●K and XVC 1●●SK (equipped with a buzzer),
- 102 decibels for XVC 1●●HK (equipped with a siren).

Cabling

XVC tower lights supplied pre-assembled are equipped with wires marked with a label indicating the correct way to connect. Each level is marked by a different coloured wire.

XVC tower lights that have been pre-assembled and pre-cabled at the factory cannot be modified because the wires are permanently connected (soldered)

Description

XVC tower lights comprise an assembly of:

- 1 A cover.
- 2 One, two, three, four or five coloured illuminated signalling units (red, orange, green, blue or clear). Each illuminated unit is equipped with a LED (Super Bright LED).
- 3 A base mounted on the support tube 3A or a base fitted with 3 screws 3B for direct mounting on a horizontal surface.
- 4 A chromium plated-steel support tube mounted on a bracket, for mounting on a vertical support (depending on the model).
- 5 Marked wires, with projecting length of 500 to 900 mm (depending on the model).

Environment characteristics						
		XVC 4B● XVC 4B●5S XVC 4B●K	XVC 6B● XVC 6B●5S XVC 6B●K XVC 6B●5SK	XVC 4M● XVC 4M●5S	XVC 6M● XVC 6M●5S XVC 6M●K XVC 6M●5SK	
Product certifications		CE (UL, CSA)		CE (UL, CSA and CCC)		
Conformity to standards		EN/IEC 61000-6-2, EN/IEC 61000-6-3	EN/IEC 61000-6-2, EN/IEC 61000-6-3, EN/IEC 61000-6-4	EN/IEC 60947-1, EN/IEC 60947-5-1		
Protective treatment		"TC"				
Ambient air temperature	Storage	°C	- 35...+ 70			
	Operation	°C	- 10...+ 50			
Electric shock protection conforming to IEC 61140	Mounted on support tube	Class I				
	Mounted on base	Class II		Class I		
Degree of protection conforming to IEC 60529	Mounted on support tube	IP 54 (Flat surface installation) IP 23 (Vertical surface installation)				
	Mounted on base	IP 54 (Flat surface installation)				
Material	Top cover	PBT + ABS (UL94HB)		PBT + ABS (UL94V-0)		
	Illuminated lens unit	PC (polycarbonate)				
	Base	ABS or PBT + ABS				
	Support tube	SGP (chromium-plated)	STK (chromium-plated)	SGP (chromium-plated)	STK (chromium-plated)	
	L mounting bracket	SPCC (Cr3 + chromium-plated)				
Light source		LED				
Electrical characteristics						
Rated voltage		V	≈ 24	~ 100 - 240		
Rated impulse withstand voltage		kV	0.8	4		
Consumption - at rated voltage (for XVC 4B● / XVC 6B●) - at ~ 100 V (for XVC 4M● / XVC 6M●)	Steady light	1 unit	mA	25	30	35
		2 units	mA	50	45	50
		3 units	mA	75	60	
		4 units	mA	100	75	
		5 units	mA	125	90	
	Steady/flashing light with buzzer	1 unit	mA	65	50	60
		2 units	mA	90	65	75
		3 units	mA	115	80	85
		4 units	mA	140	95	100
		5 units	mA	165	110	115
Audible units	Sound level (continuous or intermittant tone) at 1 m	dB	70...85			
	Fundamental frequency	kHz	2.23			
Flashing frequency of illuminated units		Hz	1			
Connection	Cable diameter	mm ²	Wire c.s.a. 0.33 mm ² / AWG 22 (1)		Wire c.s.a. 0.33 mm ² / AWG 22 (1) Wire c.s.a. 0.83 mm ² / SPT-1 AWG 18 (1)	
	Cable length	mm	600 for XVC 4B● 900 for XVC 4B●5S 500 for XVC 4B●K	600 for XVC 6B● 550 for XVC 6B●5S 850 for XVC 6B●K and XVC 6B●5SK	450 XVC 6M● : - 450 for signal - 550 for power - 550 for earth XVC 6M●5S : - 450 for signal - 450 for power - 450 for earth XVC 6M●K and XVC 6M●5SK : - 750 for signal - 850 for power - 850 for earth	

(1) A.W.G. : American Wire Gauge.

Signalling solutions

Monolithic tower lights

Harmony type XVC Ø 100 mm

Pre-assembled and pre-cabled tower lights

Environment characteristics							
Type of tower light		XVC 1B●K XVC 1B●SK	XVC 1M●K XVC 1M●SK	XVC 1B●HK	XVC 1M●HK		
Product certifications		CE (UL, CSA)					
Conformity to standards		EN/IEC 61000-6-2, EN/IEC 61000-6-3, EN/IEC 61000-6-4	EN/IEC 60947-1, EN/IEC 60947-5-1	EN/IEC 61000-6-2, EN/IEC 61000-6-3, EN/IEC 61000-6-4	EN/IEC 60947-1, EN/IEC 60947-5-1		
Protective treatment		"TC"					
Ambient air temperature	Storage	°C	- 35...+ 70		- 35...+ 70		
	Operation	°C	- 30...+ 50		- 20...+ 50		
Electric shock protection conforming to IEC 61140	Mounted on support tube	-					
	Mounted on base	Class II	Class I	Class II	Class I		
Degree of protection conforming to IEC 60529	Mounted on support tube	-					
	Mounted on base	IP 54 (Flat surface installation)					
Material	Top cover	PBT + ABS (UL94-V0)					
	Illuminated lens unit	PC (polycarbonate)					
	Base	PBT + ABS (UL94-V0)					
	Support tube	-					
	L mounting bracket	-					
Light source		LED					
Electrical characteristics							
Rated voltage		V	~ 24	~ 100 - 240	~ 24	~ 100 - 240	
Rated impulse withstand voltage		kV	0.8	4	0.8	4	
Consumption - at rated voltage (for XVC 1B●) - at ~ 100 V (for XVC 1M●)	Steady/flashing light	1 unit	mA	100	75	-	-
		2 units	mA	200	120	-	-
		3 units	mA	300	160	-	-
		4 units	mA	400	215	-	-
		5 units	mA	500	270	-	-
	Steady/flashing light with buzzer	1 unit	mA	150	85	460	235
		2 units	mA	250	130	550	280
		3 units	mA	350	170	660	320
		4 units	mA	450	230	-	-
		5 units	mA	550	280	-	-
Audible units	Sound level at 1 m	dB	60...85 (continuous or intermittent tone)		0...102		
Flashing frequency of illuminated units		Hz	0.7...3				
Connection	Cable diameter	Wire c.s.a.: 0.33 mm ² / AWG 22 (1) Wire c.s.a.: 0.83 mm ² / AWG 18 (1)					
	Cable length	mm	500				

(1) AWG: American Wire Gauge.

Signalling solutions

Monolithic tower lights

Harmony type XVC Ø 40 mm

Pre-assembled and pre-cabled tower lights



XVC 4B5

XVC 4B55S

Pre-assembled and pre-cabled tower lights Ø 40 mm

Description	Light source (included)	Voltage V	Signalling colours (1)		Reference	Weight kg
			Steady	Flashing (2)		
For support tube mounting, 17 mm						
Without buzzer	LED for steady light only	≈ 24	R	–	XVC 4B1	0.500
			R, O	–	XVC 4B2	0.520
			R, O, G	–	XVC 4B3	0.540
			R, O, G, B	–	XVC 4B4	0.560
			R, O, G, B, C	–	XVC 4B5	0.580
		~ 100-240	R	–	XVC 4M1	0.720
			R, O	–	XVC 4M2	0.750
			R, O, G	–	XVC 4M3	0.780
			R, O, G, B	–	XVC 4M4	0.810
			R, O, G, B, C	–	XVC 4M5	0.840
With buzzer + flashing light	LED for steady or flashing light	≈ 24	R	R	XVC 4B15S	0.600
			R, O	R, O	XVC 4B25S	0.620
			R, O, G	R, O, G	XVC 4B35S	0.640
			R, O, G, B	R, O, G, B	XVC 4B45S	0.660
			R, O, G, B, C	R, O, G, B, C	XVC 4B55S	0.680
		~ 100-240	R	R	XVC 4M15S	0.740
			R, O	R, O	XVC 4M25S	0.770
			R, O, G	R, O, G	XVC 4M35S	0.800
			R, O, G, B	R, O, G, B	XVC 4M45S	0.830
			R, O, G, B, C	R, O, G, B, C	XVC 4M55S	0.860

For base mounting

Without buzzer	LED for steady light only	≈ 24	R	–	XVC 4B1K	0.100
			R, O	–	XVC 4B2K	0.120
			R, O, G	–	XVC 4B3K	0.140
			R, O, G, B	–	XVC 4B4K	0.160
			R, O, G, B, C	–	XVC 4B5K	0.180

Accessories for support tube mounting

Description	Diameter mm	Minimum height to be added mm	Reference	Weight kg
Metal fixing plate	90	32	XVC Z11	0.100
Plastic fixing plate	84	24.5	XVC Z01	0.060
Wall mounting bracket	–	82	XVC Z31	0.130

(1) Signalling colours: R: Red, O: Orange, G: Green, B: Blue, C: Clear. The colours are listed in the same order as the mounting order of the illuminated units (from top to bottom).

(2) Flashing function can be simply selected/programmed by wiring.



XVC Z11



XVC Z31

Signalling solutions

Monolithic tower lights

Harmony type XVC Ø 60 mm

Pre-assembled and pre-cabled tower lights



XVC 6B5

XVC 6M5



XVC 6B5K

XVC 6M5K



XVC Z32

Pre-assembled and pre-cabled tower lights Ø 60 mm

Description	Light source (included)	Voltage V	Signalling colours (1)		Reference	Weight kg
			Steady	Flashing (2)		
For support tube mounting, 22 mm						
Without buzzer	LED for steady light only	~ 24	R	–	XVC 6B1	0.700
			R, O	–	XVC 6B2	0.740
			R, O, G	–	XVC 6B3	0.780
			R, O, G, B	–	XVC 6B4	0.820
			R, O, G, B, C	–	XVC 6B5	0.860
		~ 100-240	R	–	XVC 6M1	0.960
			R, O	–	XVC 6M2	1.020
			R, O, G	–	XVC 6M3	1.070
			R, O, G, B	–	XVC 6M4	1.120
			R, O, G, B, C	–	XVC 6M5	1.180
With buzzer + flashing light	LED for steady or flashing light	~ 24	R	R	XVC 6B15S	0.900
			R, O	R, O	XVC 6B25S	0.940
			R, O, G	R, O, G	XVC 6B35S	0.980
			R, O, G, B	R, O, G, B	XVC 6B45S	1.020
			R, O, G, B, C	R, O, G, B, C	XVC 6B55S	1.060
		~ 100-240	R	R	XVC 6M15S	1.010
			R, O	R, O	XVC 6M25S	1.070
			R, O, G	R, O, G	XVC 6M35S	1.120
			R, O, G, B	R, O, G, B	XVC 6M45S	1.170
			R, O, G, B, C	R, O, G, B, C	XVC 6M55S	1.230

For base mounting

Without buzzer	LED for steady light only	~ 24	R	–	XVC 6B1K	0.200
			R, O	–	XVC 6B2K	0.250
			R, O, G	–	XVC 6B3K	0.300
			R, O, G, B	–	XVC 6B4K	0.350
			R, O, G, B, C	–	XVC 6B5K	0.400
		~ 100-240	R	–	XVC 6M1K	0.440
			R, O	–	XVC 6M2K	0.500
			R, O, G	–	XVC 6M3K	0.550
			R, O, G, B	–	XVC 6M4K	0.600
			R, O, G, B, C	–	XVC 6M5K	0.660
With buzzer + flashing light	LED for steady or flashing light	~ 24	R	R	XVC 6B15SK	0.200
			R, O	R, O	XVC 6B25SK	0.250
			R, O, G	R, O, G	XVC 6B35SK	0.300
			R, O, G, B	R, O, G, B	XVC 6B45SK	0.350
			R, O, G, B, C	R, O, G, B, C	XVC 6B55SK	0.400
		~ 100-240	R	R	XVC 6M15SK	0.490
			R, O	R, O	XVC 6M25SK	0.550
			R, O, G	R, O, G	XVC 6M35SK	0.600
			R, O, G, B	R, O, G, B	XVC 6M45SK	0.650
			R, O, G, B, C	R, O, G, B, C	XVC 6M55SK	0.710

Accessories for support tube mounting and base mounting

Description	For use with	Diameter mm	Minimum height to be added (mm)	Reference	Weight kg
Metal fixing plate for support-tube mounting	XVC 6●● and XVC 6●●5S	100	30	XVC Z02	0.080
Metal fixing plate for base mounting	XVC 6●● K and XVC 6●●5SK	84	21.6	XVC Z12	0.100
Wall mounting bracket for support-tube mounting	XVC 6●● and XVC 6●●5S	–	82	XVC Z32	0.130

(1) Signalling colours: R: Red, O: Orange, G: Green, B: Blue, C: Clear. The colours are listed in the same order as the mounting order of the illuminated units (from top to bottom).

(2) Flashing function can be simply selected/programmed by wiring.

Signalling solutions

Monolithic tower lights

Harmony type XVC Ø 100 mm

Pre-assembled and pre-cabled tower lights



Pre-assembled and pre-cabled tower lights Ø 100 mm

Description	Light source (included)	Voltage V	Signalling colours (1)		Reference	Weight kg	
			Steady	Flashing (2)			
For base mounting							
Without buzzer With flashing light	LED for steady or flashing light	~ 24	R	R	XVC 1B1K	0.700	
			R, O	R, O	XVC 1B2K	0.900	
			R, O, G	R, O, G	XVC 1B3K	1.100	
			R, O, G, B	R, O, G, B	XVC 1B4K	1.300	
			R, O, G, B, C	R, O, G, B, C	XVC 1B5K	1.500	
			~ 100-240	R	R	XVC 1M1K	1.000
			R, O	R, O	XVC 1M2K	1.200	
			R, O, G	R, O, G	XVC 1M3K	1.400	
			R, O, G, B	R, O, G, B	XVC 1M4K	1.600	
			R, O, G, B, C	R, O, G, B, C	XVC 1M5K	1.800	
With buzzer + flashing light	LED for steady or flashing light	~ 24	R	R	XVC 1B1SK	0.700	
			R, O	R, O	XVC 1B2SK	0.900	
			R, O, G	R, O, G	XVC 1B3SK	1.100	
			R, O, G, B	R, O, G, B	XVC 1B4SK	1.300	
			R, O, G, B, C	R, O, G, B, C	XVC 1B5SK	1.500	
			~ 100-240	R	R	XVC 1M1SK	1.050
			R, O	R, O	XVC 1M2SK	1.250	
			R, O, G	R, O, G	XVC 1M3SK	1.450	
			R, O, G, B	R, O, G, B	XVC 1M4SK	1.650	
			R, O, G, B, C	R, O, G, B, C	XVC 1M5SK	1.850	
With siren + flashing light	LED for steady or flashing light	~ 24	R	R	XVC 1B1HK	1.580	
			R, O	R, O	XVC 1B2HK	1.780	
			R, O, G	R, O, G	XVC 1B3HK	1.980	
			~ 100-240	R	R	XVC 1M1HK	1.680
			R, O	R, O	XVC 1M2HK	1.880	
			R, O, G	R, O, G	XVC 1M3HK	2.080	

Accessories for mounting on vertical support

Description	For use with	Diameter mm	Height mm	Reference	Weight kg
Chromium plated-steel extension tube with metal fixing plate	XVC 1●●K and XVC 1●●SK	140	300	XVC Z13	0.700
	XVC 1●●HK (with siren)	140	306	XVC Z14	0.700
Metal fixing bracket	XVC 1●●K and XVC 1●●SK	–	–	XVC Z23	0.380
	XVC 1●●HK (with siren)	–	–	XVC Z24	0.380

(1) Signalling colours: R: Red, O: Orange, G: Green, B: Blue, C: Clear. The colours are listed in the same order as the mounting order of the illuminated units (from top to bottom).

(2) Flashing function can be simply selected/programmed by wiring.



Signalling solutions

Monolithic tower lights

Harmony type XVC Ø 40 mm

Pre-assembled and pre-cabled tower lights

Pre-assembled and pre-cabled tower lights Ø 40 mm

With support tube mounting

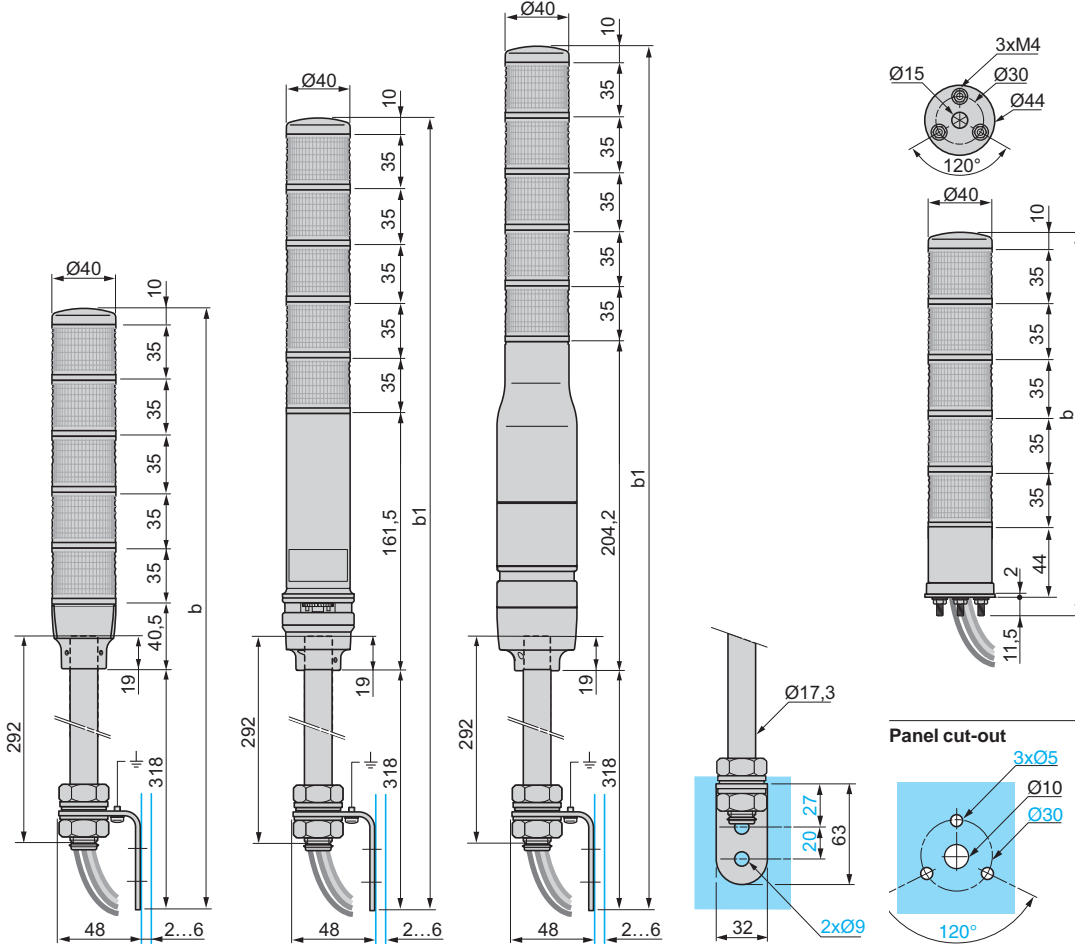
XVC 4B●

XVC 4B●5S

XVC 4M●, XVC 4M●5S

For direct mounting on horizontal support

XVC 4B●K



Height of pre-assembled and pre-cabled tower lights

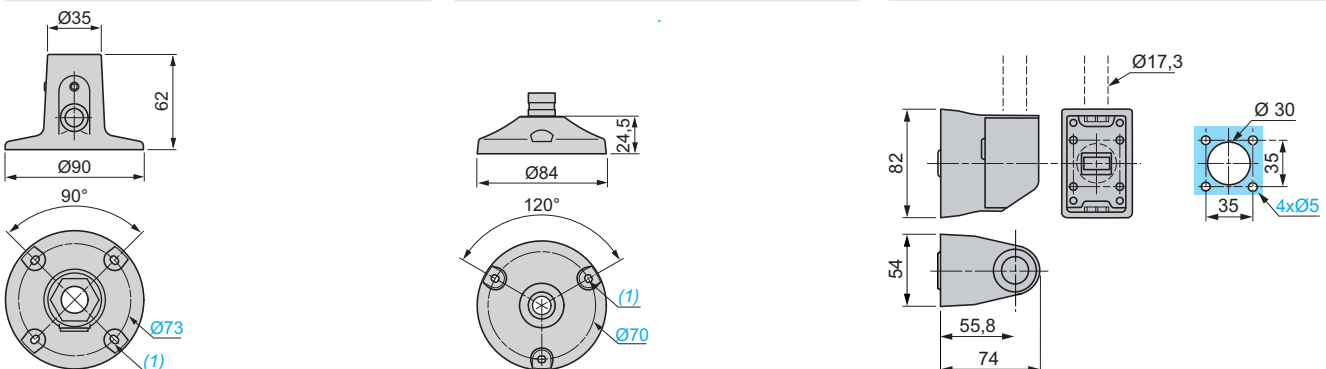
No. of illuminated units	b Without buzzer (mm)	b1 With buzzer (mm)		No. of illuminated units	b Without buzzer (mm)
		XVC 4B●5S	XVC 4M●, XVC 4M●5S		
1 stage	403.5	524.5	567.2	1 stage	100.5
2 stages	438.5	559.5	602.2	2 stages	135.5
3 stages	473.5	594.5	637.2	3 stages	170.5
4 stages	508.5	629.5	672.2	4 stages	205.5
5 stages	543.5	664.5	707.2	5 stages	240.5

Accessories for tower lights type XVC 4●● and XVC 4●●5S

Metal fixing plate, XVC Z11

Plastic fixing plate, XVC Z01

Wall mounting bracket, XVC Z31



(1) 4 elongated holes Ø 4.2 x 5.

(1) 3 elongated holes Ø 4.2 x 5

Presentation, description: page 35097/2

Characteristics: page 35097/3

References: page 35097/5

Signalling solutions

Monolithic tower lights

Harmony type XVC Ø 60 mm

Pre-assembled and pre-cabled tower lights

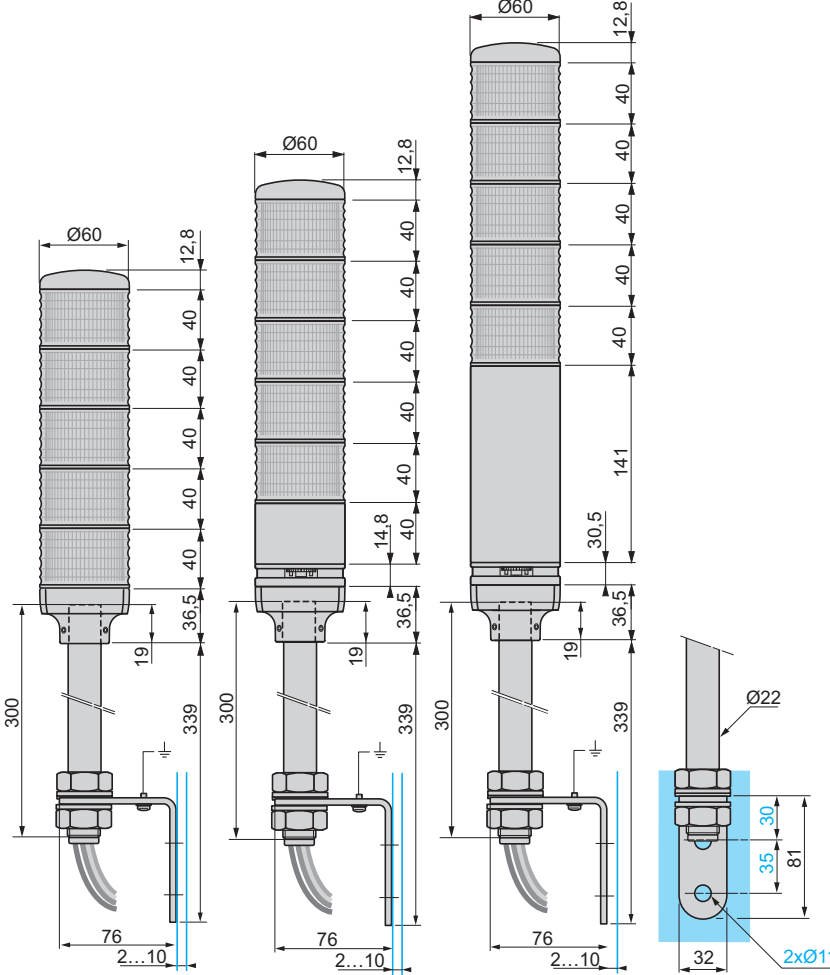
Pre-assembled and pre-cabled tower lights Ø 60 mm

With support tube mounting

XVC 6B●

XVC 6B●5S

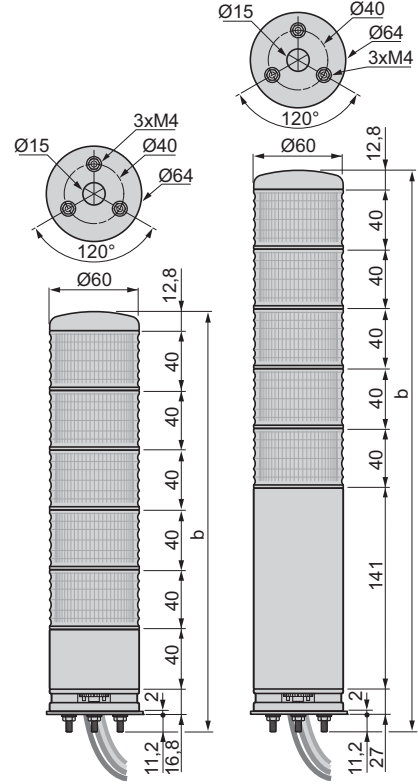
XVC 6M●, XVC 6M●5S



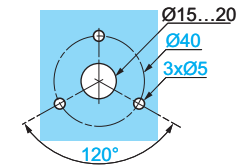
For mounting on horizontal support (direct or with fixing plate)

XVC 6B●K, 6B●5SK

XVC 6M●K, XVC 6M●5SK



Panel cut-out



Height of pre-assembled and pre-cabled tower lights

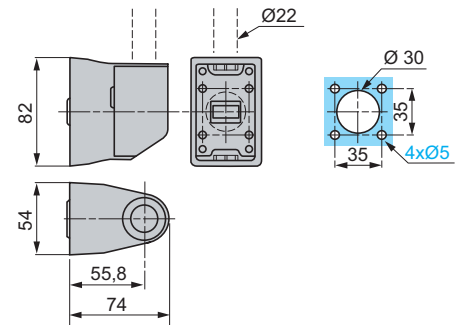
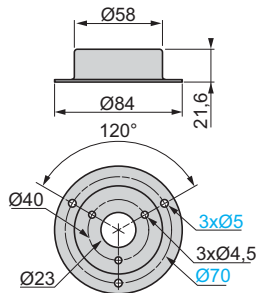
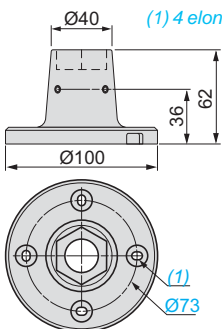
No. of illuminated units	b Without buzzer (mm)		b1 With buzzer (mm)		No. of illuminated units	b With or without buzzer (mm)	
	XVC 6B●5S	XVC 6M●, XVC 6M●5S	XVC 6B●K, XVC 6B●5SK	XVC 6M●K, XVC 6M●5SK			
1 stage	428.3	483.1	599.8		1 stage	120.8	232
2 stages	468.3	523.1	639.8		2 stages	160.8	272
3 stages	508.3	563.1	679.8		3 stages	200.8	312
4 stages	548.3	603.1	719.8		4 stages	240.8	352
5 stages	588.3	643.1	759.8		5 stages	280.8	392

Accessories for mounting on horizontal support

Fixing plate XVC Z02 for XVC 6●● / 6●●5S

Fixing plate XVC Z12 for XVC 6●●K / 6●●5SK

Wall mounting bracket XVC Z32 for XVC 6●● / 6●●5S



Signalling solutions

Monolithic tower lights

Harmony type XVC Ø 100 mm

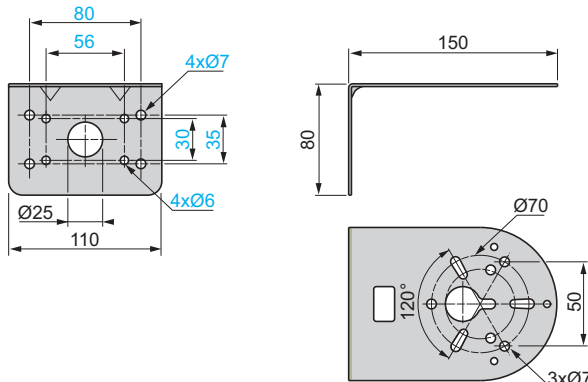
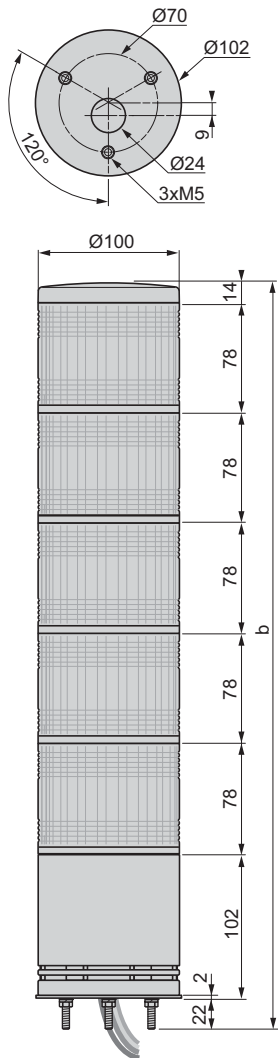
Pre-assembled and pre-cabled tower lights

Pre-assembled and pre-cabled tower lights Ø 100 mm

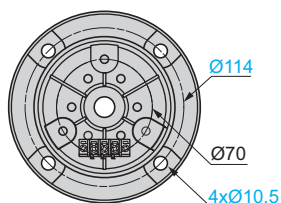
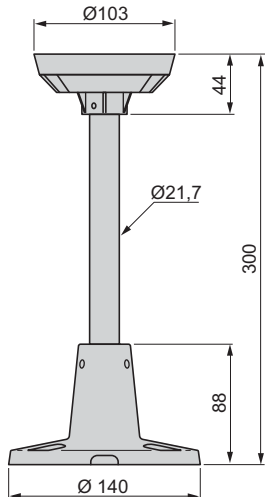
For mounting on horizontal support (direct or with fixing plate)

XVC 1●●K, XVC 1●●SK tower lights

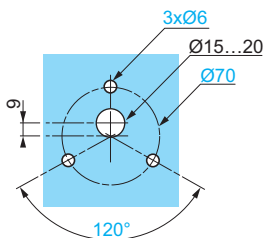
XVC Z23 fixing plate



XVC Z13 fixing plate



Panel cut-out



Height of pre-assembled and pre-cabled tower lights

No. of illuminated units	b (mm)
1	216
2	294
3	372
4	450
5	528

Signalling solutions

Monolithic tower lights

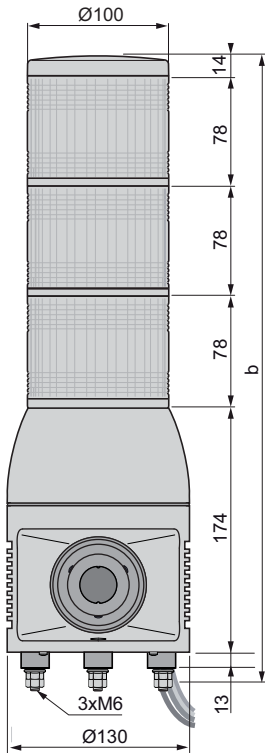
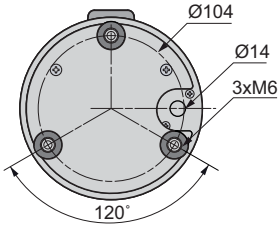
Harmony type XVC Ø 100 mm

Pre-assembled and pre-cabled tower lights

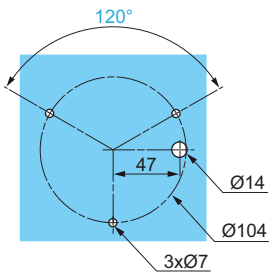
Pre-assembled and pre-cabled tower lights Ø 100 mm with siren

For mounting on horizontal support (direct or with fixing plate)

XVC 1●●HK tower lights



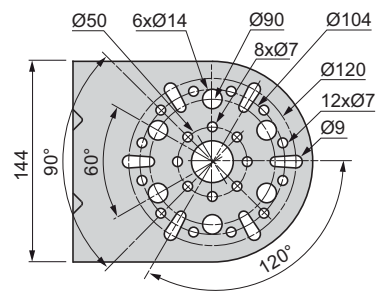
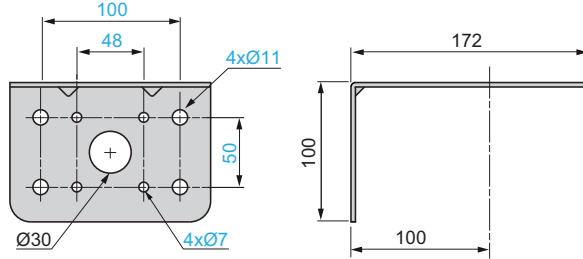
Panel cut-out



Height of pre-assembled and pre-cabled tower lights

No. of illuminated units	b (mm)
1	293
2	371
3	449

XVC Z24 fixing plate



XVC Z14 fixing plate

